

Powering a clean energy future

Project fact sheet

Lotus Creek Wind Farm is located on cattle grazing land in Lotus Creek, north of Clarke Creek.

Project at a glance

Lotus Creek Wind Farm Pty Ltd is owned by CS Energy, a Queensland Government owned energy corporation. CS Energy employs more than 700 people and provides power to some of the state's biggest industries and employers.

The project is being constructed by Vestas and Zenviron.

The project has an estimated investment of more than \$1.3 billion, some of which will be invested in the Central Queensland region.

Status	Construction
Planned capacity	285 MW
No. of turbines	46 turbines
Turbine model	Vestas V162-6.2MW
Blade tip height	Approximately 230m
Connection	Powerlink 275kV network
Jobs	Up to 400 during construction, 10-15 during operation
Homes powered	Approximately 170,000 average Queensland homes

Project progress

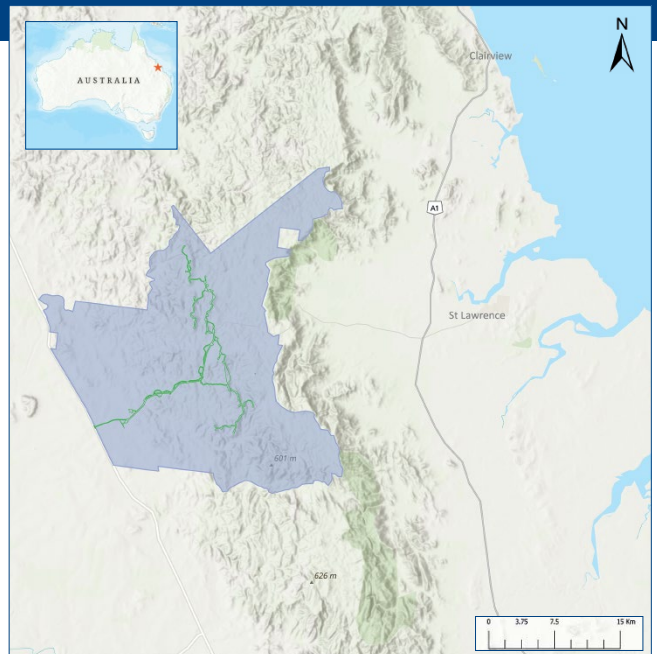


Project location

Lotus Creek

The Lotus Creek Wind Farm is located in central Queensland, north of Clarke Creek. The site has access to high voltage transmission lines and good road access with few neighbouring properties.

The land around Lotus Creek has been used for cattle farming for generations. The Lotus Creek Wind Farm presents an opportunity to establish a new economic activity in the region that is complementary to cattle farming. The project will produce clean, affordable electricity using the consistent winds in the nearby ranges, whilst allowing cattle farming to continue for future generations.



Project boundary and indicative turbine layout

Community benefits

CS Energy is committed to investing in the regions where we work to build vibrant, liveable communities.

The Lotus Creek Wind Farm Community Benefit Fund provides financial support to projects and events that help enrich the Lotus Creek, Clarke Creek, St Lawrence and surrounding communities in a tangible, lasting way.

Through the fund, \$100,000 is awarded annually over two rounds per year (to be opened in March and September). Eligible organisations can apply for up to \$10,000 for an individual project.

Learn more at: <https://lotuscreekwindfarm.com.au/our-community/community-benefits/>



Get in touch

Supplier inquiries

Lotus Creek Wind Farm encourages local industry interested in supplying to the project to provide an expression of interest (EOI) through the ICN Gateway.

ICN Gateway project page:

🌐 <https://gateway.icn.org.au/projects/5482>

ICN Gateway contact:

Nimmi Pushparajan

☎ +61 7 3364 0670

✉ nimmi.pushparajan@icnqld.org.au

General inquiries

Lotus Creek Wind Farm welcomes all other feedback and enquiries. You can subscribe to our newsletters, submit feedback or questions, and find other ways to get involved by visiting our website.

🌐 lotuscreekwindfarm.com.au

✉ info@lotuscreekwindfarm.com.au

☎ 1800 979 876 (toll free)

Lotus Creek Wind Farm acknowledges the traditional owners of the land on which the project is located – the Barada Barna and Barada Kabalbara Yetimarala peoples.

